

4

3

2

1

NOTES: UNLESS OTHERWISE SPECIFIED.

1. ITEMS 5, 9, 10, 11, 12, 13, 14, 15 AND 16, NOT SHOWN ON DRAWING.

2. DIMENSIONS IN [] ARE MILLIMETERS.

TOLERANCE: 1/32 [0.8]

3. PUMP SPECIFICATIONS:

MODEL: 31821-0492

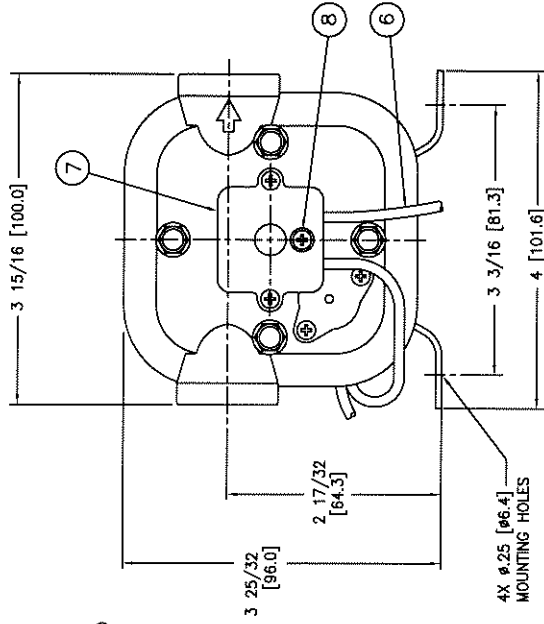
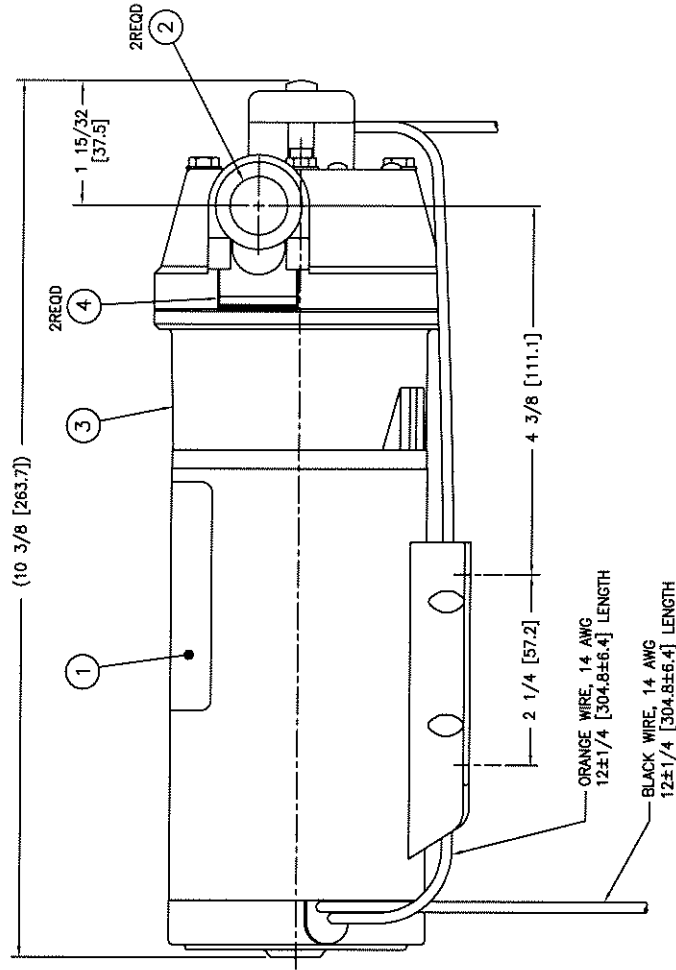
VOLTAGE: 12 VDC

AMPERAGE: 6.8

FLOW: 2.1 GPM

PRESSURE: 40 PSI

MAX FLOW: 3.3 GPM



REVISIONS						
REV	DESCRIPTION	EO NO	BY	DATE	CHK	DATE APVD
A	RELEASED	405-058	HV	03/15/05	EO	03/18/05
					EZ	03/18/05

MATERIAL		APPROVALS		DATE	
<input type="checkbox"/> JABSCO COSTA MESA, CA	<input type="checkbox"/> FLOUJET FORTVAL, FRANCE, CH	DRN BY	H. VU	03/15/05	03/15/05
TITLE		DESIGN BY	EO	03/18/05	03/18/05
PUMP INSTALLATION/PACKAGING DWG		APPROVED BY	EZ	03/18/05	03/18/05
PUMP PARMAX3 DIAPHRAGM IND. 12V		SCALE: 1/1	DO NOT SCALE DRAWING		
REV		COMPUTER FILE NO	131821-0492		
A		SHEET 1 OF 1			

4

3

2

1